



TV-SERIES

LOW PROFILE, ELECTRIC, CONVECTION OVEN



TVES/10SC shown
with optional casters

□ TVES/10SC

Standard Features

- 7.5kW high efficiency heating elements
- Available in standard depth
- Single deck TruVection oven is 27-1/4" in height
- Stainless steel front, sides and top
- Dependent 2-piece glass doors (Full 180° opening)
- Energy saving high efficiency glass windows
- Heat keeping dual door seal system
- Coved, porcelain interior
- Stay cool heavy duty door handle.
- Two speed, 1/2 hp, fan motor
- 5-position rack guides and 3 chrome plated oven racks
- Solid state temperature controls
- Forced cool down fan mode
- Oven "heat" light cycles with burners
- Interior oven lights
- Platinum modular equipment or Heavy Duty Counterline units can sit on single electric range modular deck.
- Overlapping range tops require an additional add-on cabinet. (See spec sheet TVES/30SC for stacked TruVection units)

Available Control

SC-Standard Controls

- 150°F to 550°F solid state thermostat and 60 minute mechanical cook timer.

OPTIONS & ACCESSORIES AT ADDITIONAL COST

- | | | |
|--|---|---|
| <input type="checkbox"/> List the voltage, frequency, and amps (see utility information).
_____ VAC, _____ Phase, _____ Hz. | <input type="checkbox"/> 12" stainless steel legs | <input type="checkbox"/> Export crating |
| <input type="checkbox"/> Ventless Design
*(UL certified) | <input type="checkbox"/> 26" stainless steel legs | <input type="checkbox"/> Extra oven racks |
| <input type="checkbox"/> Stainless steel solid door | <input type="checkbox"/> Casters 4" or 6" | <input type="checkbox"/> Stainless steel dirt tray |
| | <input type="checkbox"/> Marine edge top | <input type="checkbox"/> Bottom, roller bearing, sliding rack |
| | <input type="checkbox"/> Stainless steel interior | <input type="checkbox"/> Stainless steel rear jacket |
| | | <input type="checkbox"/> Down draft diverter for direct flue |

CONSTRUCTION SPECIFICATIONS

Exterior Finish: Stainless steel front, sides and top.

Doors: Dependent doors with windows. Low emission glass, stainless steel construction, heavy-duty welded steel frame and 5/8" diameter full-length hinge pin.

Oven Interior: Porcelain enamel finish, coved, fastener free.

Rack and Rack Guides: Heavy-duty removable wire rack guides spaced on 1-5/8" centers offer 5 different rack positions. Three wire racks provided with each oven.

Blower Motor: 1/2hp, 2-speed motor, 1710/1120 r.p.m

Oven Heating: Oven heating is regulated by an adjustable thermostat control. Blower fan circulates air within the cavity "scrubbing" heat to the oven interior for even heat distribution within the cavity.

Note: Oven cannot be operated without fan in operation.

Control Panel: Located on front, at right side of oven, away from heat zone. Removable panel pulls out for easy servicing.

Interior Lights: Two 40 watt temperature recessed lamps located within the oven cavity.

Legs: 6" stainless steel legs standard.

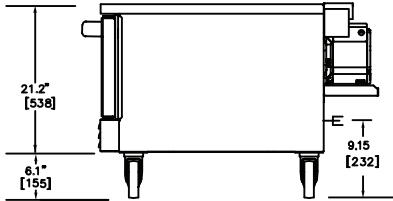
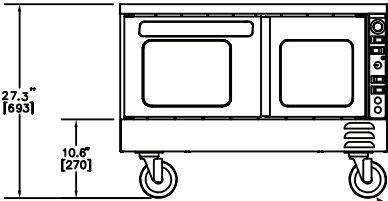
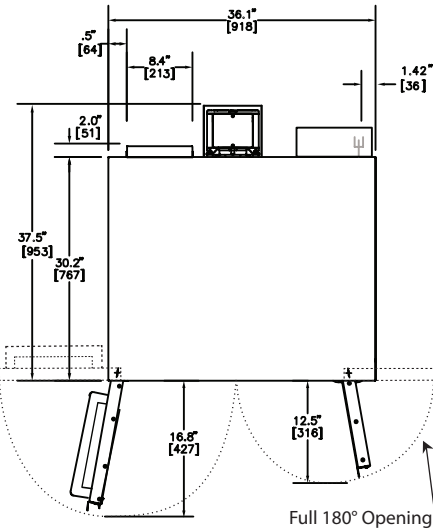
Electrical System: Terminal connections are located below oven section and are accessible from the front of the oven. These sheath type electrical heating elements located at the rear of the oven function as a single heating unit with a combined rating of 7.5 kW. Available voltages include 208, 240, 380, and 480 VAC single or three phase, 50/60 Hz. Ovens equipped with 480VAC single or three phase heating elements use 240V controls and motors and do not require separate electrical lead wires.



Approval Notes: _____

TVES10SC

Dimensions shown in inches and (millimeters)



DIMENSIONS

MODEL	OVEN INTERIOR (PER DECK)			RACK CLEARANCE		SHIPPING CRATE				
	WIDTH	DEPTH	HEIGHT	WIDTH	DEPTH	WIDTH	DEPTH	HEIGHT	VOLUME	WEIGHT
TVES/10SC	29" (737)	21.50" (546)	14" (356)	28.25" (718)	21.00" (533)	57.50" (1461)	45.50" (1156)	45" (1143)	68.1 cu. ft. (1.93 cu. m.)	300 lbs (136.08 kg)

Dimensions shown in inches and (millimeters)

UTILITY INFORMATION

Standard: 1/2 horsepower, 2 speed motor, 1710/1120 r. p. m.

ELECTRICAL DATA		AMPS*	
EACH OVEN	VOLTAGE	1 PHASE	3 PHASE
7.5 kW Heating Elements*	208 VAC, 60Hz	36.1	20.9
	220/240 VAC, 50Hz	28.7	16.6
	240 VAC, 60Hz	31.3	18.1
	380/220 VAC, 50Hz	19.8	11.4
	415/240 VAC, 50Hz	31.3(X-Neut.)	10.5
	480 VAC, 60Hz	15.7	9.1

* Phase shipped per order. Add an additional 4.3 amps for the control panel.

MISCELLANEOUS

- Clearances from combustibles: Top, bottom, right, left side -0".
- Recommend- nstall under vented hood
- Check local codes for fire and sanitary regulations.

NOTICE:

Southbend has a policy of continuous product research and improvement. We reserve the right to change specifications and product design without notice. Such revisions do not entitle the buyer to corresponding changes, improvements, additions or replacements for previously purchased equipment.

INTENDED FOR COMMERCIAL USE ONLY.
NOT FOR HOUSEHOLD USE.

